
Product Information

IBBAL

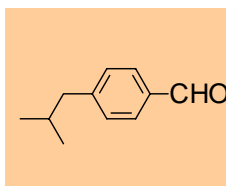
--- p-Isobutylbenzaldehyde ---



MITSUBISHI GAS CHEMICAL COMPANY, INC.

Description

p-Isobutylbenzaldehyde is a clear colorless liquid.
Chemical formula: C₁₁H₁₄O



Molecular weight: 162.2

Typical Properties

Appearance, visual	Colorless liquid
Purity, %	99.6
Color, HAZEN	10
Boiling Point, °C	240
Melting Point, °C	Not known
Vapor Pressure, 89°C, mmHg	Not known
Acid value, mgKOH/g	0.1
Specific gravity, 20°C	0.960
Odor	Aromatic odor
Solubility ...	Soluble in ethanol, ether and toluene Insoluble in water

Sales Specifications

Purity, GC, %	96 min
Color, spectrophotometry, HAZEN	100 max
Acid value, titration, mgKOH/g	3 max

Applications

Additives for resins, Pharmaceutical intermediate
Agricultural intermediate, Flavor and Fragrance

Container Information

Available in 190 Kgs steel drum.

Precautions for Safe Handling and Use

Extinguishing media

Small fire: Carbon dioxide,
Large fire: Water spray or alcohol foam

Health safety precautions

Avoid contact with eyes, skin and clothing.
Avoid breathing vapor.
Wash thoroughly the face, the hands after handling.

Storage conditions

Store in cool and dry place.

For specific safety, handling and toxicity information,
please refer to the current Material Safety Data Sheet.

First Aid

If inhaled

Remove to fresh air immediately. Call a physician.

Skin contact

Wash skin thoroughly with a plenty of soap and water
while removing contaminated clothing and shoed.

Eye contact

Immediately flush eyes with a plenty of water enough.
Call a physician.

If swallowed

Induce vomiting if victim is conscious. Call a physician.
Never give anything by mouth to an unconscious person.

Chemical Registration Numbers

CAS: 40150-98-9

The information presented herein is believed to be accurate and reliable, but is presented without guarantee or responsibility on the part of Mitsubishi Gas Chemical Company. It is the responsibility of the users to comply with all applicable laws and regulations and to provide for a safe workplace. The user should consider any health or safety hazards or information contained herein only as a guide, and should take those precautions which are necessary or prudent to instruct employees and to develop work practice procedures in order to promote a safe work environment. Further, nothing contained herein shall be taken as an inducement or recommendation to manufacture or use any of the herein materials or processes in violation of existing or future patents.



mitsubishi gas chemical company, inc.

Americas	mitsubishi gas chemical america, inc. 655 Third Avenue 24th Floor, New York, NY 10017 U.S.A. Phone: +1-212-687-9030 • Fax: +1-212-687-2810
Europe	mitsubishi gas chemical europe gmbh Immermannstr.13, D-40210 Dusseldorf, Germany Phone: +49-211-363080 • Fax: +49-211-354457
Head Office	mitsubishi gas chemical company, inc. 5-2, 2-chome, Marunouchi, Chiyoda-ku, Tokyo 100-8324 Japan Phone: +81-3-3283-4812 • Fax: +81-3-3214-0938