

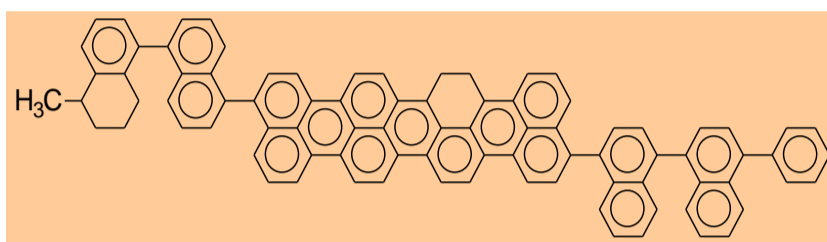
Product Information

AR --- AR Resin ---



MITSUBISHI GAS CHEMICAL COMPANY, INC.

Description AR Resin



Typical Properties	Appearance, visual	Black pellet
	Bulk Density (g/cm ³)	> 0.65
	Specific Gravity (25iC)	1.23
	Specific Heat (cal/giC)	0.65
	Softening point, °C	275-295
	Mesophase content, wt%	100
	Hydrogen / Carbon (atom/atom).....	0.58-0.64
	Flash Point (iC)	> 300
	Ash (ppm).....	< 20

Sales Specifications	Appearance, visual	Black pellet
	Softening point, °C.....	275-295

Applications	Carbon-Carbon composite (C/C composite)
	Carbon / graphite fibers

Container Information	500Kgs flexible containers
	100Kgs drums
	20Kgs cans

Precautions for Safe Handling and Use

Extinguishing media

Small fire: Carbon dioxide,
Large fire: Water spray

Health safety precautions

Avoid contact with eyes, skin and clothing.
Avoid breathing vapor.
Wash thoroughly the face, the hands after handling.

Storage conditions

Store in cool and dry place.

For specific safety, handling and toxicity information,
please refer to the current Material Safety Data Sheet.

First Aid

If inhaled

Remove to fresh air immediately. Call a physician.

Skin contact

Wash skin thoroughly with a plenty of soap and water
while removing contaminated clothing and shoed.

Eye contact

Immediately flush eyes with a plenty of water enough.
Call a physician.

If swallowed

Induce vomiting if victim is conscious. Call a physician.
Never give anything by mouth to an unconscious person.

Chemical Registration Numbers

CAS: 25135-16-4

The information presented herein is believed to be accurate and reliable, but is presented without guarantee or responsibility on the part of Mitsubishi Gas Chemical Company. It is the responsibility of the users to comply with all applicable laws and regulations and to provide for a safe workplace. The user should consider any health or safety hazards or information contained herein only as a guide, and should take those precautions which are necessary or prudent to instruct employees and to develop work practice procedures in order to promote a safe work environment. Further, nothing contained herein shall be taken as an inducement or recommendation to manufacture or use any of the herein materials or processes in violation of existing or future patents.



MITSUBISHI GAS CHEMICAL COMPANY, INC.

America

655 Third Avenue 24th Floor, New York, NY 10017 U.S.A. TEL: 1-212-687-9030 FAX: 1-212-687-2810

Europe

Immermannstr.13, D-40210 Dusseldorf, Germany TEL : 49-211-363080 FAX : 49-211-354457

Singapore

24 Raffles Place #16-01 Clifford Centre, Singapore 048621 TEL : 65-6224-0059 FAX : 65-6224-6079

Thailand

195, Empire Tower, 18Floor, Unit 1810, Sathorn Rd., Yannawa, Sathorn, Bangkok, Thailand TEL : 66-2-670-3417 FAX : 66-2-670-3419

Head Office

5-2, 2-chome, Marunouchi, Chiyoda-ku, Tokyo 100-8324 Japan TEL: 81-3-3283-4812 FAX: 81-3-3214-0938