
Product Information

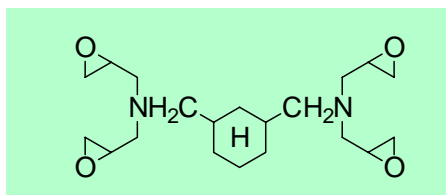
TETRAD-C

--- 1,3-bis(N,N-diglycidylaminomethyl)cyclohexane ---

 MITSUBISHI GAS CHEMICAL COMPANY, INC.

Description

TETRAD-C is a pale yellow liquid.
Chemical formula: $C_{20}H_{34}N_2O_4$



Molecular weight: 366.5

Typical Properties

Appearance, visual	Pale yellow liquid
Color, Gardner	1
Flash Point, °C, Cleveland open tester	234
Amine Value	290-310
Specific gravity, d_{4}^{25}	1.09-1.11
Solubility	Soluble in benzene, toluene, xylene, n-butanol, i-propanol, methanol dimethylformamide, diethyl ether acetone, methyl ethyl ketone Insoluble in water, n-hexane

Sales Specifications

Color, Gardner	≤ 5
Viscosity, mPa·s, 25°C	1,600-3,000
Volatile Matter, %	≤ 1
Epoxy Equivalent Weight	95-110

Applications

Electrical insulator/ Encapsulate material for IC, LSI, potting
Composite material/ Matrix for fiber-reinforced material
Heatproof resin, Heatproof paint
Cross-linking agent for -OH and -COOH

Container Information Available in 18Kg cans.

Precautions for Safe Handling and Use

Extinguishing media

Dry chemical, Regular foam, Water fog

Health safety precautions

Avoid contact with eyes, skin and clothing.

Avoid breathing vapor.

Wash thoroughly the face, the hands after handling.

Storage conditions

Store in cool and dry place with adequate ventilation.

For specific safety, handling and toxicity information, please refer to the current Material Safety Data Sheet.

First Aid

If inhaled

Remove to fresh air immediately. Call a physician.

Skin contact

Wash exposed area thoroughly with plenty of soap and water while removing contaminated clothing and shoes. Call a physician.

Eye contact

Immediately flush eyes with plenty of water enough. Call a physician.

If swallowed

Immediately give 2 large glasses of water if victim is conscious. Call a physician.

Never give anything by mouth to an unconscious person.

Chemical Registration Numbers

CAS: 65992-66-7

EINECS: 265-994-2

The information presented herein is believed to be accurate and reliable, but is presented without guarantee or responsibility on the part of Mitsubishi Gas Chemical Company. It is the responsibility of the users to comply with all applicable laws and regulations and to provide for a safe workplace. The user should consider any health or safety hazards or information contained herein only as a guide, and should take those precautions which are necessary or prudent to instruct employees and to develop work practice procedures in order to promote a safe work environment. Further, nothing contained herein shall be taken as an inducement or recommendation to manufacture or use any of the herein materials or processes in violation of existing or future patents.



MITSUBISHI GAS CHEMICAL COMPANY, INC.

Americas	MITSUBISHI GAS CHEMICAL AMERICA, INC. 655 Third Avenue 24th Floor, New York, NY 10017 U.S.A. Phone: +1-212-687-9030 • Fax: +1-212-687-2810
Europe	MITSUBISHI GAS CHEMICAL EUROPE GMBH Immermannstr.13, D-40210 Dusseldorf, Germany Phone: +49-211-363080 • Fax: +49-211-354457
Head Office	MITSUBISHI GAS CHEMICAL COMPANY, INC. 5-2, 2-chome, Marunouchi, Chiyoda-ku, Tokyo 100-8324 Japan Phone: +81-3-3283-4812 • Fax: +81-3-3214-0938