

---

Product Information
---------------------

## TETRAD-X

--- N,N,N',N'-tetraglycidyl-m-xylenediamine ---

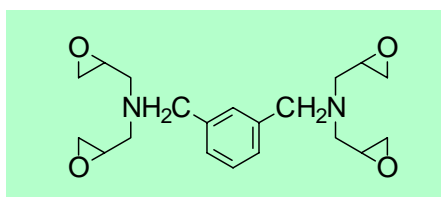


MITSUBISHI GAS CHEMICAL COMPANY, INC.

---

### Description

TETRAD-X is a pale yellow liquid.  
Chemical formula:  $C_{20}H_{28}N_2O_4$



Molecular weight: 360.5

---

### Typical Properties

Appearance, visual	.....	Pale yellow liquid
Flash Point, °C	.....	243
Amine Value	.....	300-320
Specific gravity, $d_{4}^{25}$	.....	1.14-1.16
Solubility	..... Soluble in benzene, toluene, xylene Diethyl ether, acetone, methy ethyl ketone ethyl acetate, n-butanol, i-propanol methanol, dimethylformamide	

---

### Sales Specifications

Color, Gardner	.....	$\leq 5$
Viscosity, mPa·s, 25°C	.....	1,600-3,000
Volatile Matter, %	.....	$\leq 1$
Epoxy Equivalent Weight	.....	95-110

---

### Applications

Electrical insulator/ Encapsulate material for IC, LSI, potting  
Composite material/ Matrix for fiber-reinforced material  
Heatproof resin, Heatproof paint  
Cross-linking agent for -OH and -COOH

---

### Container Information

Available in 200 Kg steel drums and 18kg cans.

---

---

## Precautions for Safe Handling and Use

### Extinguishing media

Dry chemical, Regular foam, Water fog

### Health safety precautions

Avoid contact with eyes, skin and clothing.

Avoid breathing vapor.

Wash thoroughly the face, the hands after handling.

### Storage conditions

Store in cool and dry place with adequate ventilation.

For specific safety, handling and toxicity information, please refer to the current Material Safety Data Sheet.

---

## First Aid

### If inhaled

Remove to fresh air immediately. Call a physician.

### Skin contact

Wash exposed area thoroughly with plenty of soap and water while removing contaminated clothing and shoes. Call a physician.

### Eye contact

Immediately flush eyes with plenty of water enough. Call a physician.

### If swallowed

Immediately give 2 large glasses of water if victim is conscious. Call a physician.

Never give anything by mouth to an unconscious person.

---

## Chemical Registration Numbers

CAS: 63738-22-7

EINECS: 264-438-6

---

The information presented herein is believed to be accurate and reliable, but is presented without guarantee or responsibility on the part of Mitsubishi Gas Chemical Company. It is the responsibility of the users to comply with all applicable laws and regulations and to provide for a safe workplace. The user should consider any health or safety hazards or information contained herein only as a guide, and should take those precautions which are necessary or prudent to instruct employees and to develop work practice procedures in order to promote a safe work environment. Further, nothing contained herein shall be taken as an inducement or recommendation to manufacture or use any of the herein materials or processes in violation of existing or future patents.



## MITSUBISHI GAS CHEMICAL COMPANY, INC.

Americas	<b>MITSUBISHI GAS CHEMICAL AMERICA, INC.</b> 655 Third Avenue 24th Floor, New York, NY 10017 U.S.A. Phone: +1-212-687-9030 • Fax: +1-212-687-2810
Europe	<b>MITSUBISHI GAS CHEMICAL EUROPE GMBH</b> Immermannstr.13, D-40210 Dusseldorf, Germany Phone: +49-211-363080 • Fax: +49-211-354457
Head Office	<b>MITSUBISHI GAS CHEMICAL COMPANY, INC.</b> 5-2, 2-chome, Marunouchi, Chiyoda-ku, Tokyo 100-8324 Japan Phone: +81-3-3283-4812 • Fax: +81-3-3214-0938